

Clifden Road
Twickenham
TW1 4LR



HUNTMORE
— HOMES —



94 Clifden Court Clifden Road

This two bedroom ground floor apartment in a popular development is conveniently located in central Twickenham.

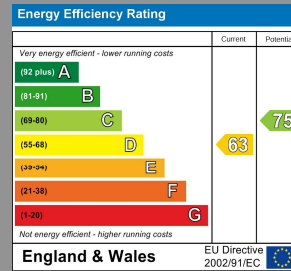
Well presented with a modern fitted kitchen with a door out to the communal gardens, a good-sized reception room, two double bedrooms and a spacious bathroom.

Clifden Court is ideally located to take advantage of all that Twickenham has to offer, from the range of boutique shops in Church Street, to the ambient restaurants and delightful riverside pubs and walks. Situated within a pleasant walk to Marble Hill Gardens along the riverside and within easy access of both Richmond and Kingston with comprehensive amenities. Commuter links are excellent with Twickenham station providing direct

services to London Waterloo, frequent bus routes and easy access to the M3 and M25 motorways and Heathrow Airport.

Local Authority
Richmond Upon Thames

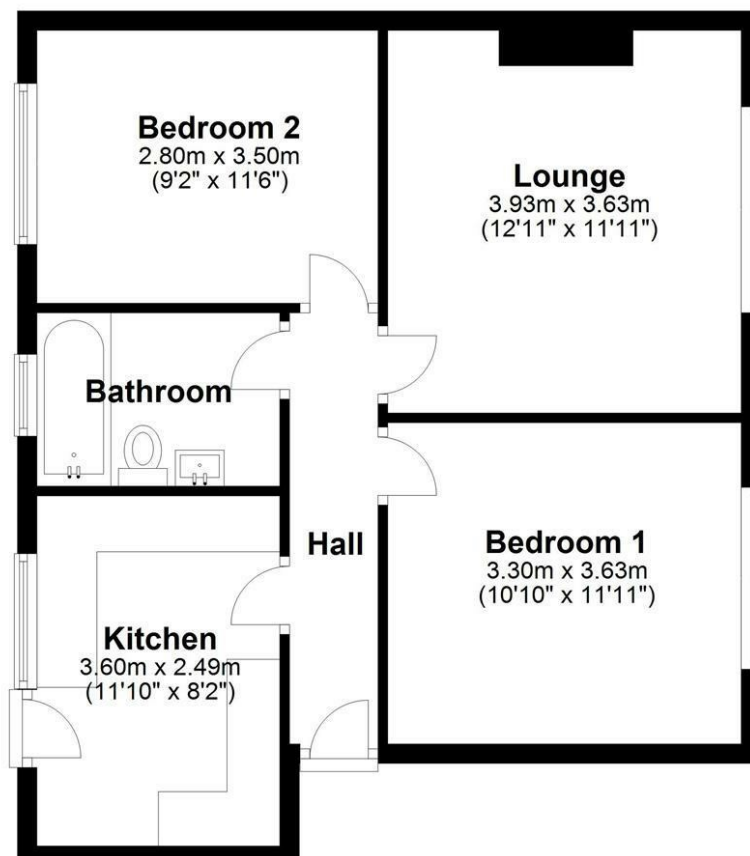
Council Tax Band
D



Agents Note: Whilst every care has been taken to prepare these particulars, they are for guidance purposes only. All measurements are approximate and are for general guidance purposes only and whilst every care has been taken to ensure their accuracy, they should not be relied upon and potential buyers/tenants are advised to recheck the measurements

Ground Floor

Approx. 55.6 sq. metres (598.5 sq. feet)



Total area: approx. 55.6 sq. metres (598.5 sq. feet)

Ealing

38 St Mary's Road
Ealing
W5 5EU

Contact

020 8567 2648

ealing@huntmorehomes.com

www.huntmorehomes.com

HUNTMORE
— HOMES —